

Shift2Rail presentation

CONNECTA & SAFE4RAIL Final Conference
Paris 26 September 2018

Sébastien DENIS

Programme Manager

S2R Joint Undertaking

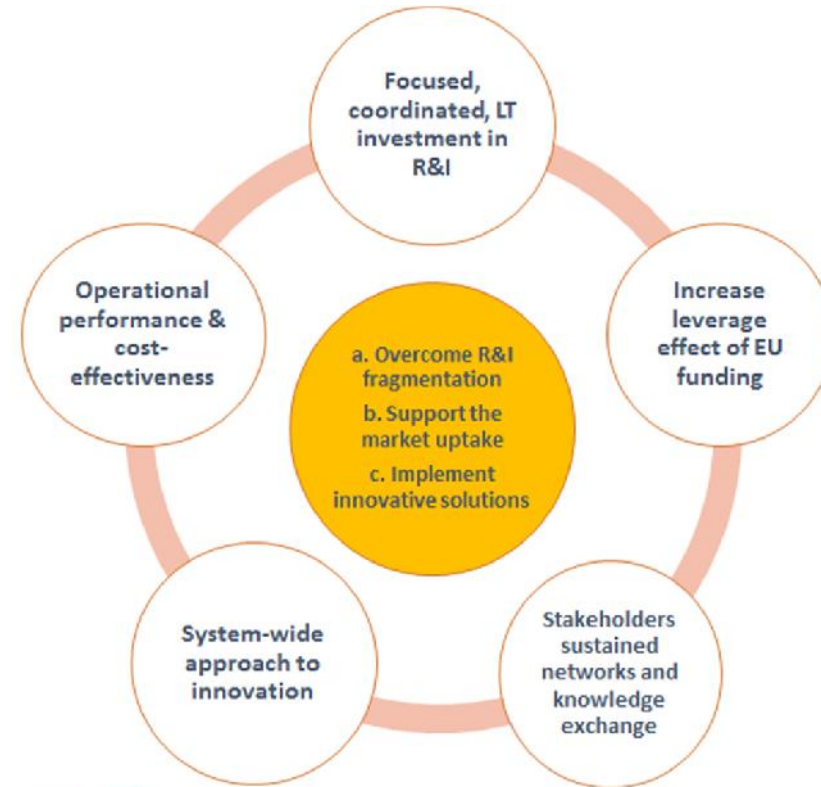
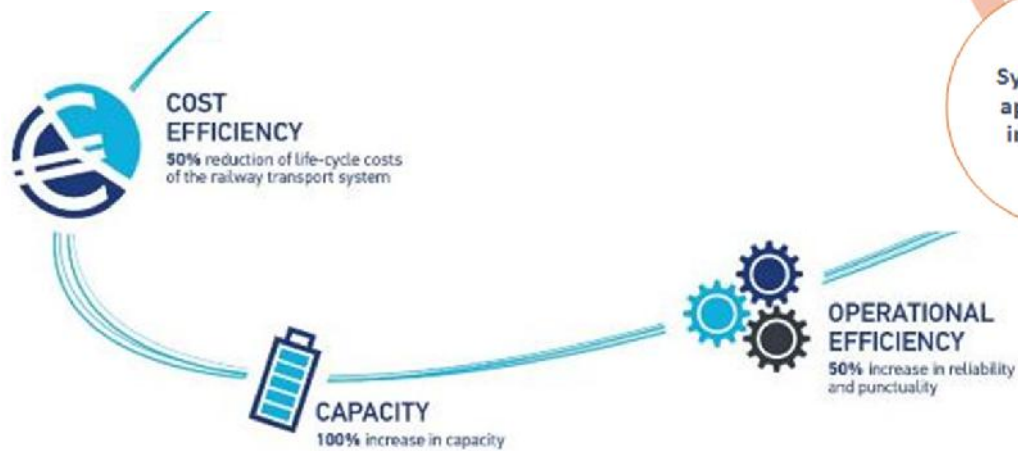
@Shift2Rail_JU
#Horizon2020



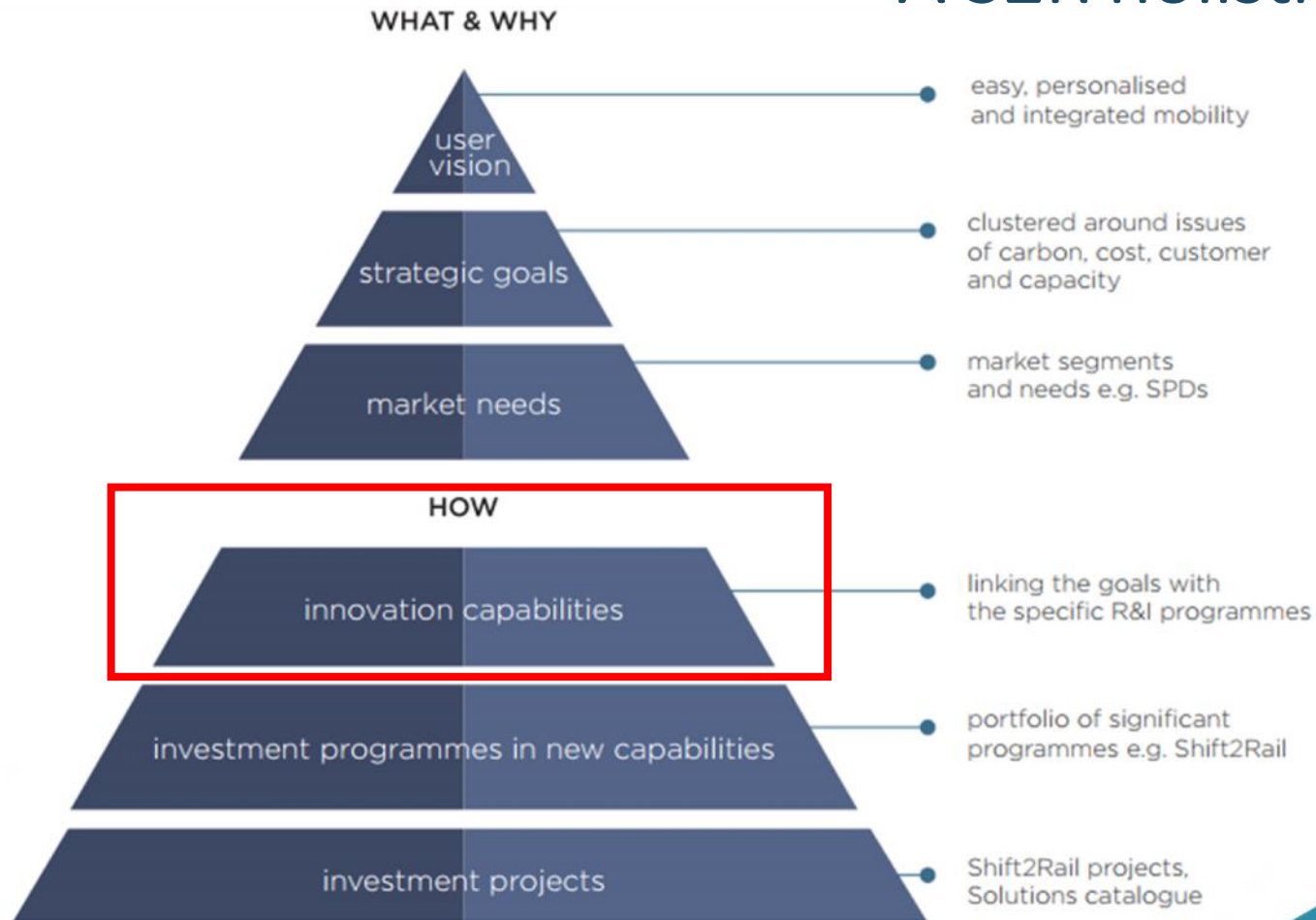
S2R PUBLIC PRIVATE PARTNERSHIP

A NEW APPROACH TO R&I IN RAILWAY

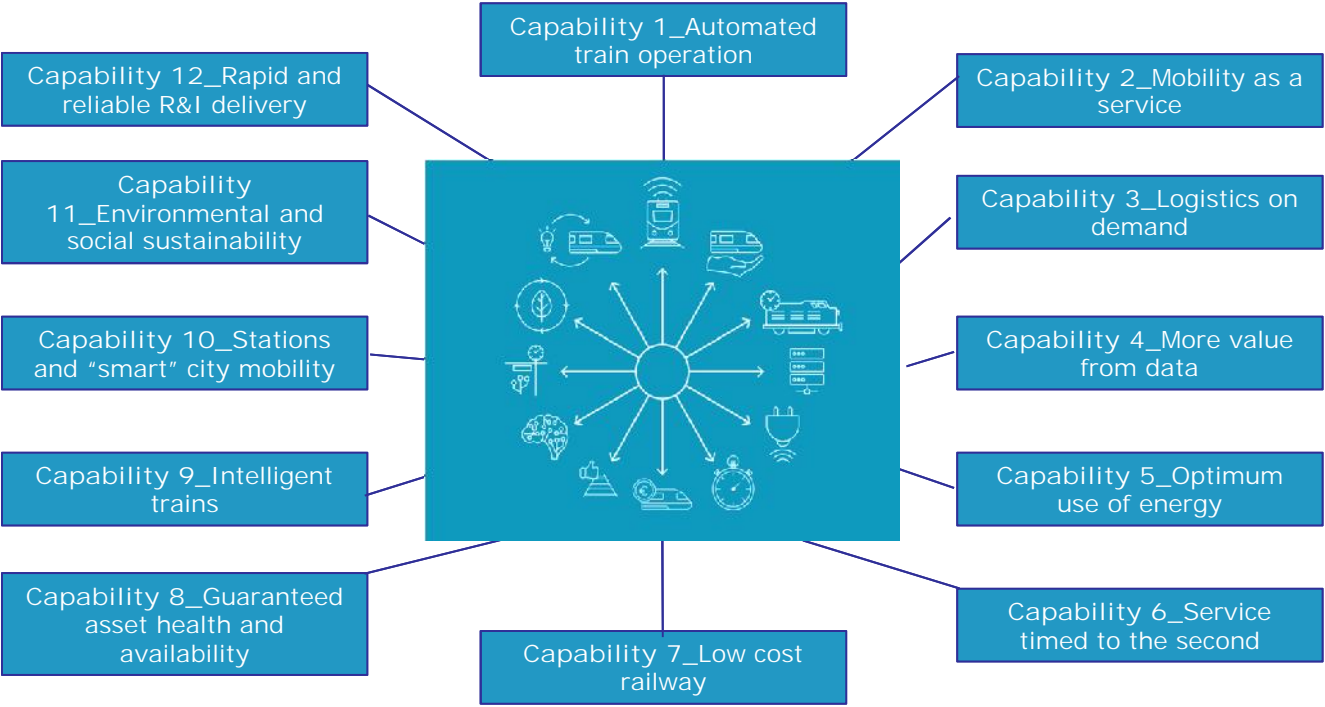
Working together & driving innovation



A S2R holistic approach...



Innovation Capabilities



A S2R holistic approach...

WHAT & WHY



easy, personalised and integrated mobility

clustered around issues of carbon, cost, customer and capacity

market segments and needs e.g. SPDs

HOW



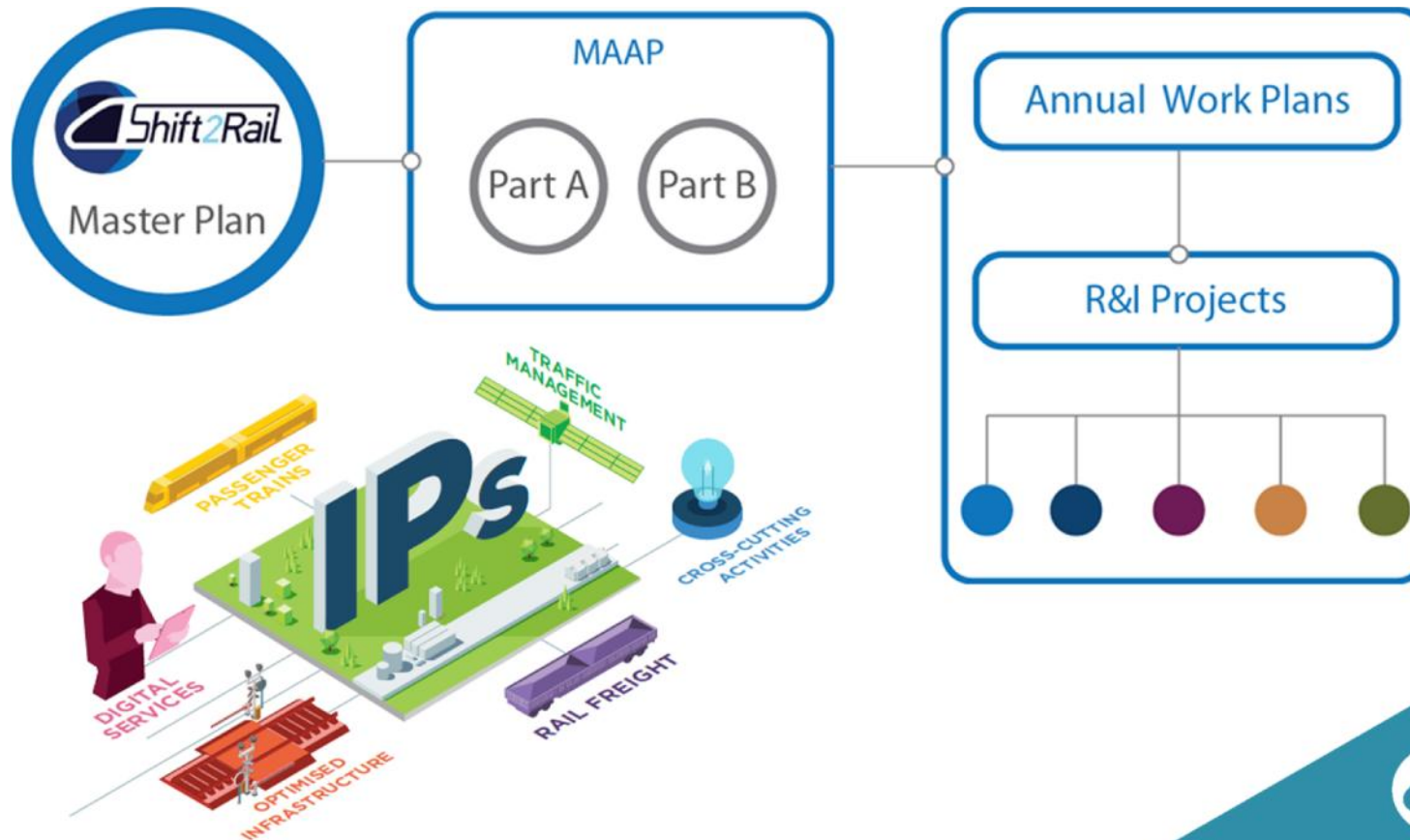
linking the goals with the specific R&I programmes

portfolio of significant programmes e.g. Shift2Rail

Shift2Rail projects, Solutions catalogue



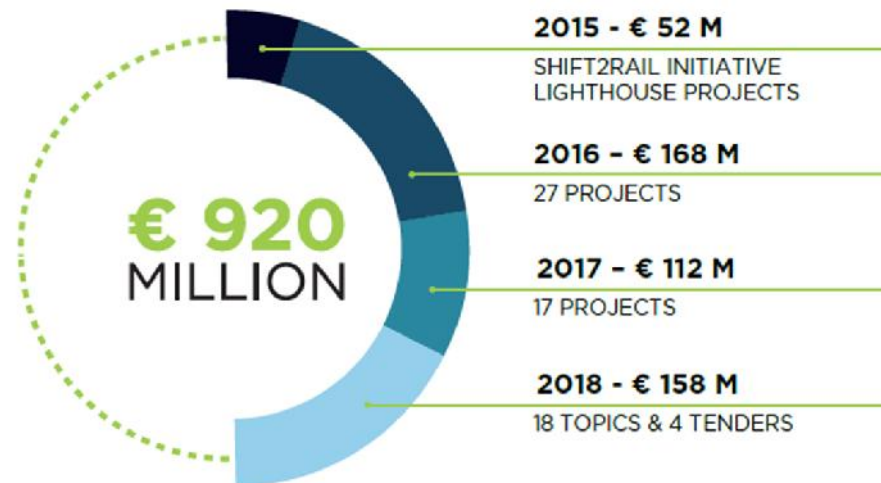
The S2R Programme implementation



S2R Key Data

S2R BUDGET 2014-2020

S2R FUNDING IS AVAILABLE THROUGH
CALLS FOR MEMBERS, OPEN CALLS FOR PROPOSALS
& PROCUREMENT



S2R Key Data

UNIQUE PARTNERSHIP¹

S2R is sustaining the competitiveness of the European rail industry to meet future mobility needs of EU citizens, acting as a rail R&I hub bringing together the manufacturers, rail operators, SMEs and research institutions.



28
MEMBERS



343
PARTICIPANTS INVOLVED
FROM **27** COUNTRIES



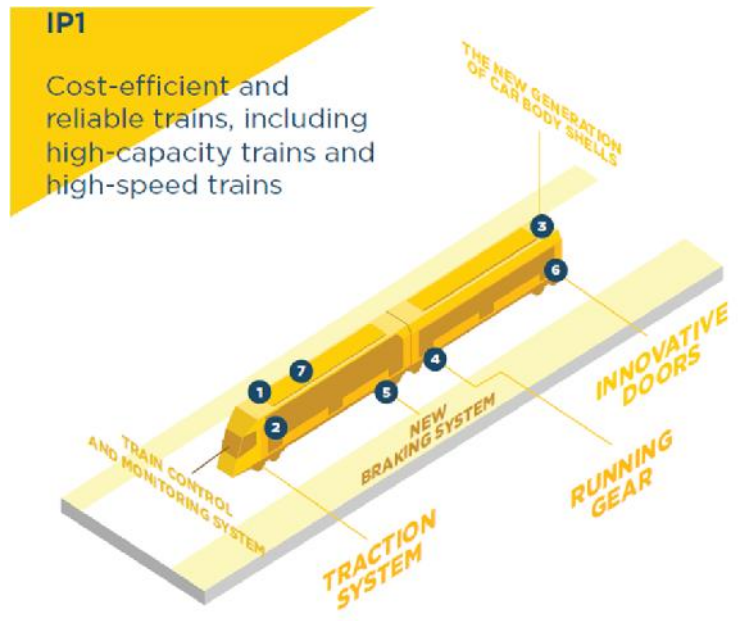
92
SMEs



84
RESEARCH CENTRES
AND UNIVERSITIES



IP1 Results



IP1

Cost-efficient and reliable trains, including high-capacity trains and high-speed trains

Designing and Prototyping components in SiC in the full traction system

Wheel Slide Protection Validation on test rig

Prototypes for innovative running gear components (e.g. wheelset for metro bogie, composite antenna)



Other IPs Results : examples



Specifications for Automatic Train Operations (ATO) semi-automated trains over ETCS



3D Simulator for interior and exterior noise



Technical enablers for Travel Companion



Proof of concept for smart energy metering



Intelligent Video Gate Demonstrator



Thank you for your attention



@Shift2Rail_JU
#Horizon2020

